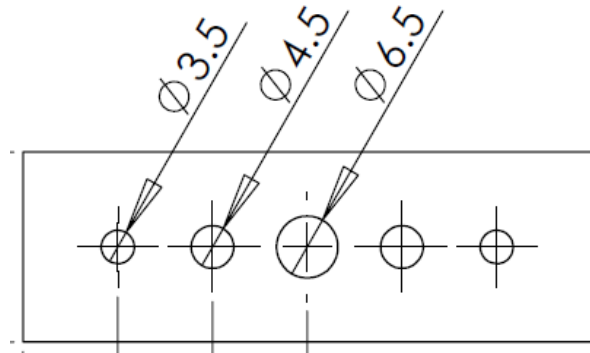


ECONOMY CSEC3 TEMPERATURE CALIBRATION SOURCE

The CSEC3 provides a very cost effective and simple to use system for on site / laboratory calibration of contact probe thermometers, to comply with quality standards such as ISO9001 and HACCP.



CSEC3



Probe hole dimensions

The CSEC3 is a dry block source for temperature calibration, incorporating a temperature control system (PID controller & platinum film sensor) to achieve accurate and stable temperatures.

Complementing the existing CSEC1 & CSEC2 models, the CSEC3 represents a very competitively priced option for in-house calibrations. Supplied with system calibration certificate traceable to UKAS.

Model CSEC3 features a temperature range from 30°C below the ambient temperature (or -10°C minimum) addressing many critical temperature requirements for food and lab applications e.g. the traditional calibration points of 0°C & 100°C. Temperature is displayed in °C / °F.

Specification	CSEC3
Range	-30°C below ambient (or -10°C minimum) to +105.0°C
Resolution	0.1°C
Accuracy	Better than ±0.3 °C
Stability	Better than 0.03 °C
Heating time: Ambient to 105°C	7 mins
Cooling time: Ambient to -5°C	7 mins
Power supply †	100V to 240 VAC
Operating temp.	+5 to +40°C
Dimensions (l x w x h)	190 x 185 x 110mm
Weight	2.7 Kg

† UK 3 pin plug to IEC mains cable supplied as standard. European 2 pin option available – please specify



People • Technology • Solutions

HEAD OFFICE : AUCKLAND Tel : (09) 579 1990
WELLINGTON : Tel : (04) 499 3591 CHRISTCHURCH : Tel : (03) 366 0017
Email : sales@eurotec.co.nz WEBSITE : www.eurotec.co.nz

HVAC • Refrigeration • Electrical • Measurement