



ENERGY
SAVING

Chil-LED™

The Coolest Light for Cold Places

NEW!
Chil-LED3



Chil-LED™ is an innovative lighting solution specifically designed for use in temperature controlled production and storage environments.

Chil-LED's unique structure achieves substantial benefits from reduced installation costs, lower energy consumption and improved reliability.

73.3%

Total system power saving against a metal halide equivalent.

23.6%

Total system power saving against a well designed LED equivalent.

Chil-LED™ is the ideal LED lighting option for:

- Cold stores
- Food production factories
- Pack houses
- Pharmaceutical production and storage areas
- Clean rooms and more!

Refrigerated areas are difficult to work in. They are busy, access is difficult and they often need to be kept spotlessly clean. They are also energy-intensive and therefore expensive to operate and maintain.

The ideal lighting system for cold stores would produce good light levels inside the cold store, but it would keep everything else outside. Electrical controls, wiring, brackets and heat would all be outside, so that the cold store environment could remain unaffected. That's exactly how Olivewood have designed the Chil-LED light fitting.



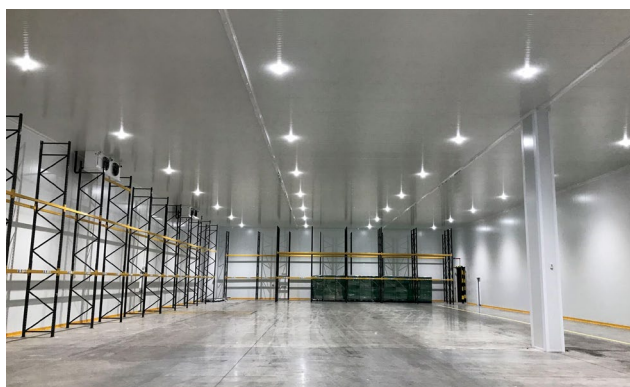
Chil-LED



Chil-LED3

Chil-LED by Olivewood, is optimized exclusively for use in insulated envelope chilled and frozen environments, where its unique structure achieves substantial benefits from reduced installation costs, lower energy consumption and improved reliability – even when compared with other Industrial LED lights.

Chil-LED3 is the successor to the original Chil-LED light fitting. It builds on the original concept, but with a simplified, more compact structure, based on a single light source.



Chil-LED3 installation in a new facility. The units fit flush against the ceiling panel, with a depth of just 50mm, ensuring plenty of clearance over pallet racking.

Chil-LED3 Key Features:

- Thermal management and electronics are located outside the insulated chamber.
- Minimal thermal load within the chamber.
- Suitable for use in chambers operating over a wide temperature range.
- Compact and low profile design for minimal chamber intrusion.
- Lamp head has been designed to be free from dirt and water traps.
- Chemical and corrosion resistant.
- Key components are easy to access for installation and maintenance.
- For ceiling thicknesses ranging from 50mm-200mm.
- IP67 protection.
- RAL 9010.
- UK Manufactured with 5-year extended warranty.

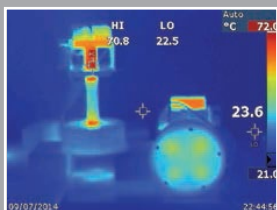
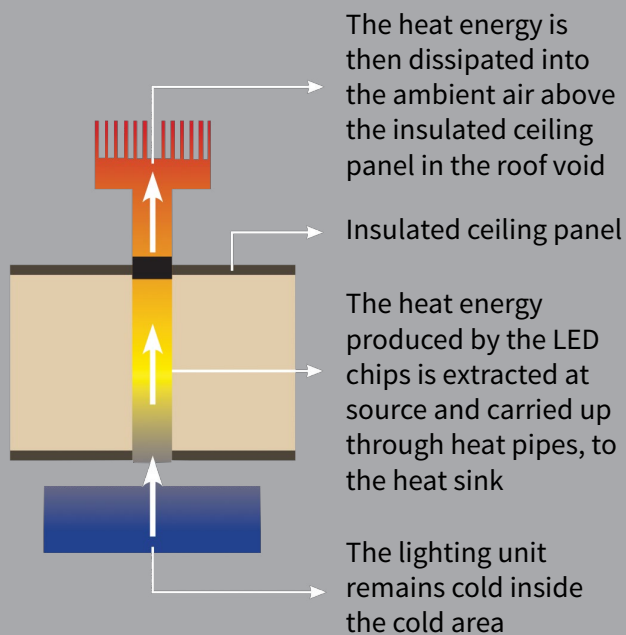
Starting with the Light Source

Latest generation LEDs have been specified and paired with Inventronics LED drivers, to give reliable, efficient, high quality light. A selection of interchangeable lenses can be used to tailor beam angles as required.



Click on the image above to watch the Chil-LED3 overview video.

Unique Patented Heat Pipe System



Chil-LED uses a **unique heat pipe system** to channel heat generated by its high power LEDs out through the ceiling of the cold store before it even enters the cold area. And because the heat never enters the cold store, it doesn't need to be extracted again. That saves energy and money.

The system that carries the heat also carries the power from the LED driver modules to the LEDs, which means that all of the wiring and control gear is situated outside the cold store.

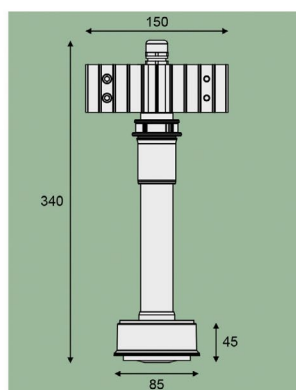
Installation

Mounting the Chil-LED fitting couldn't be easier. There are no additional brackets or chains. The system that carries the heat and power through the ceiling panels also serves as the mounting system.

It even incorporates an adjustable collar, which accommodates different insulated panel thicknesses, from 50mm up to 200mm. Integrated gaskets seal the hole from above and below the panel, ensuring that moisture cannot penetrate the panel.

Accessories

A range of spare parts, accessories and options are also available and the entire light fitting is now fully rebuildable with gaskets, seals, LED light source and other components all being able to be replaced without special tools.



Mechanical properties

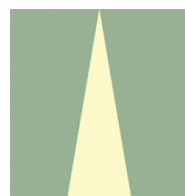
- | | |
|-----------------------|-----------------|
| • LED housing | Polycarbonate |
| • Lens | Silicone |
| • Heatsink | 6082 Aluminium |
| • Heatsink mount | 6082 Aluminium |
| • External gasket | Neoprene |
| • Upper seal | Nitrile rubber |
| • External fasteners | Stainless Steel |
| • Weight incl. driver | 1.8kg |

Installation requirements

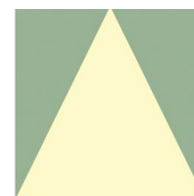
- | | |
|-----------------------------------|-------|
| • Max panel thickness | 200mm |
| • Min panel thickness | 50mm |
| • Installation bore hole diameter | 40mm |
| • Max internal chamber temp | 80°C |
| • Min internal chamber temp | -30°C |
| • Max external temp | 40°C |
| • Min external temp | -20°C |

Optical Characteristics

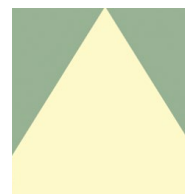
- **Light Source** LED
- **Luminaire luminous flux** Up to 12,000 Lumens
- **Luminaire efficiency** Up to 120 lm/W
- **CCT options** 1000K / 5000K
- **CRI** ≥80
- **Light distribution** 40°, 70°, 100°



40°



70°



100°



LED Driver Options (see manufacturer's data sheet for full details)

- | | | |
|------------------------------------|----------------------|----------------------|
| • Manufacturer | inventronics | inventronics |
| • Model | EUM-150S210BG | EUM-150S210DG |
| • Dimming & controls | DALI-2 D4i | 1-5V/1-10V/10VPWM |
| • Input specification | 90-305VAC/127-300VDC | 90-305VAC/127-300VDC |
| • Output connector | Superseal | Superseal |
| • Efficiency (220VAC input) | 90% | 90% |
| • Lifetime | 104,000 Hours | 106,000 Hours |
| • Power factor | 0.9 | 0.9 |

Protective Cage

- **Material** Powder coated mild steel wire
- **Dimensions** 405mm x 280mm x 255mm
- **Weight** 1.5kg



Reflector

- **Material** Polycarbonate RAL9010
- **Dimensions** Ø 150mm x 60mm
- **Weight** 100g



Emergency Kit

Any Chil-LED3 light fitting can be converted to a 3 hour self test emergency version by replacing the standard driver with an emergency conversion kit, which simply plugs into the luminaire and sits above the ceiling panel at ambient temperature, where it can easily be inspected and maintained as required.

- **Duration** 3 hours
- **Output/Emergency** 100W / 6W
- **Options** Self test / DALI / 0-10V dimming
- **Dimensions** 240mm x 190mm x 190mm
- **Includes** Driver, emergency module, batteries and status LED

